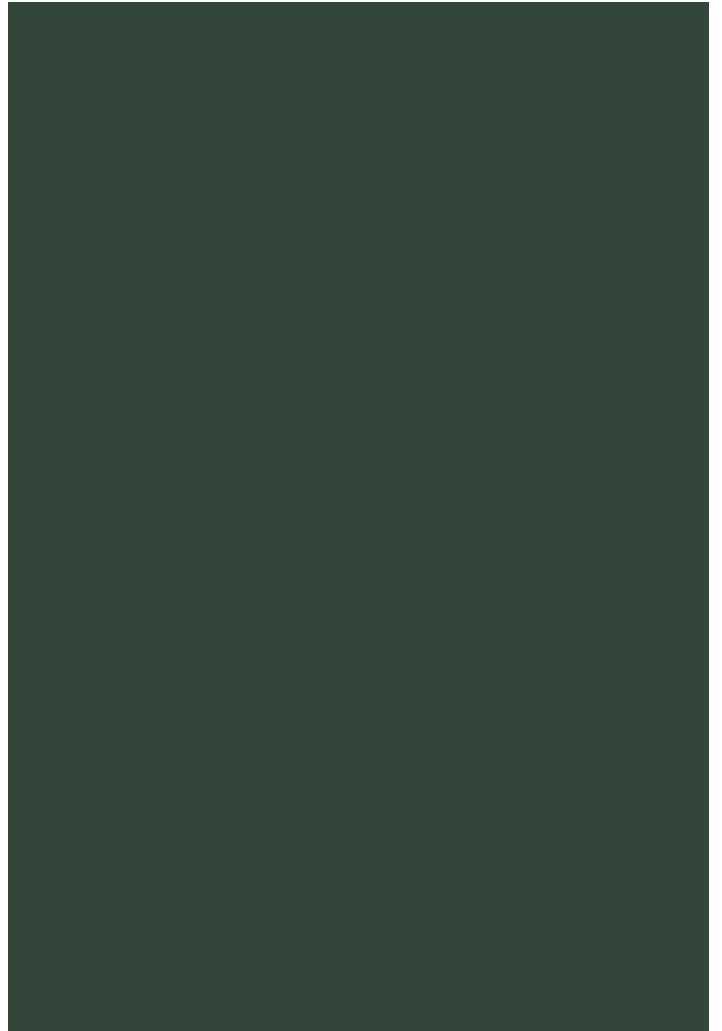


Flat 23, Belvedere
House Churchfields
Avenue
Weybridge





Flat 23, Belvedere
House Churchfields



Local Authority

Elmbridge

Council Tax Band

G

Directions

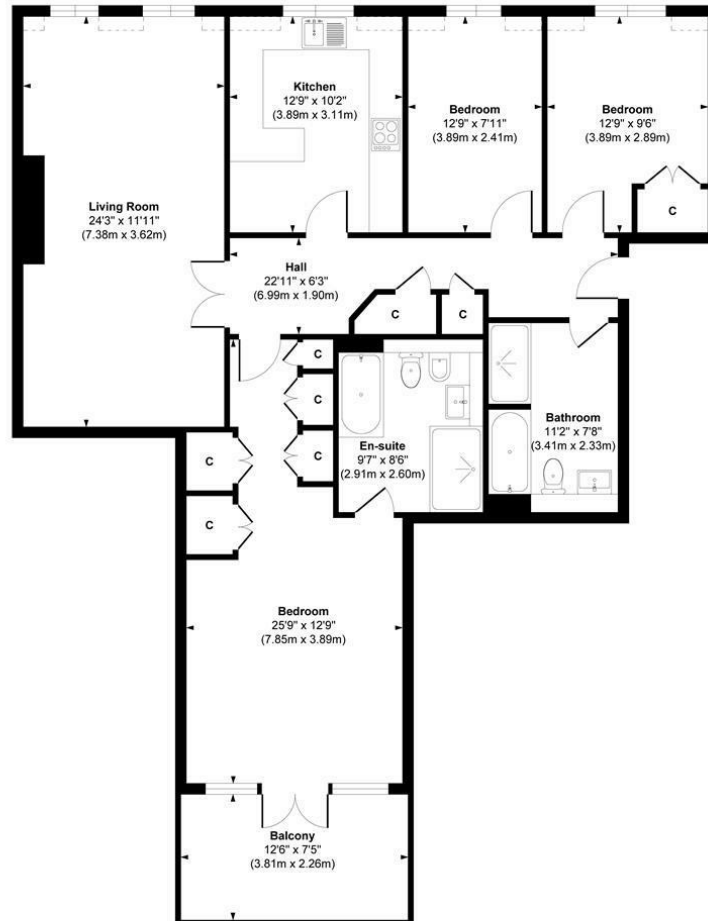
Energy Efficiency Rating		
	Current	Potential
Very energy efficient - lower running costs		
(92 plus) A		
(81-91) B		
(69-80) C		
(55-68) D		
(39-54) E		
(21-38) F		
(1-20) G		
Not energy efficient - higher running costs		
	80	82

England & Wales EU Directive 2002/91/EC



Agents Note: Whilst every care has been taken to prepare these particulars, they are for guidance purposes only. All measurements are approximate and are for general guidance purposes only and whilst every care has been taken to ensure their accuracy, they should not be relied upon and potential buyers/tenants are advised to recheck the measurements

Belvedere House



Second Plan

Approx. Gross Internal Floor Area 1252 sq. ft / 116.36 sq. m
Illustration for identification purposes only, measurements are approximate, not to scale.
Produced by Elements Property



Mint Homes
14 Nicholas Gardens
Pyrford
Surrey
GU22 8SD



Contact
01932 336177
hello@minthomes.uk
minthomes.uk

